

Inhibitory Activity of Ceiba' Honey against *Escherichia Coli* ATCC 33218

Michelle Angelica Harly¹, Donna Mesina Rosadini Pasaribu¹, and Kris Herawan Timotius^{1*}

Abstract

Escherichia coli is a type of bacteria that has evolved yearly, such as resistance to various antibiotics. Honey consumption can improve the quality of individual health. It has the potential to inhibit the growth of *Escherichia coli*. This study aimed to characterize the *Escherichia coli* ATCC 33218, and to investigate the inhibitory activity of Ceiba' honey against this strain. We obtained Ceiba' honey from the honey farm of Ceiba petandra. The antibiotic sensitivity tests revealed that the strain used in this study is not ESBL strain. Even it is resistant to Ampicillin, Amoxycillin, Penicillin, and Oxacillin and is sensitive to Cefotaxime. This study runs inhibition zone, MIC, MBC, and time-kill growth experiments to evaluate the inhibitory activity of Ceiba' honey. It showed a strong inhibition zone. Its MIC and MBC were 30 and 40%, respectively. The time-kill growth experiments revealed its inhibition by lowering the lag phase, slowing the growth rate, and decreasing the biomass yield of strain. In conclusion, *Escherichia coli* ATCC 33218 is not an ESBL strain. Furthermore, Ceiba' honey has inhibitory and killing power against *Escherichia coli* ATCC 33218.

Keywords: Ceiba Pentandra; MIC; MBC; Madu Randu; Time-Kill Growth

Abbreviations: ESBL- Extended-Spectrum Beta-Lactamase; IZ- Inhibition Zone; MIC- Minimal Inhibition Concentration; MBC- Minimal Bactericidal Concentration

Introduction

Escherichia coli is one of the normal bacteria in the human digestive tract. However, *E. coli* can cause harm to humans because this bacterium can become pathogenic and cause disease in the human digestive tract [1]. In its development, *E. coli* has evolved as a result of resistance to the use of antibiotics. The ability of *E. coli* to withstand the effects of antibiotics is a new defense strategy referred to by the term "resistance mechanism" [2]. This resistance indicates that fewer antibiotic options will be available to treat infections caused by *E. coli* [3]. Increased antibiotic resistance is a problem in the health care center and the community, in the form of an increase in the incidence of infection [4,5]. The search for new antibiotics requires a long process and time [6]. Interestingly, Indonesian people widely use honey to improve the process of healing [7]. Especially during the COVID-19 (Corona virus diseases-19) pandemic, the consumption of honey has increased for health reasons [8]. Honey is a liquid that has a syrup-like form. It is condensed and has a sweet taste. Particular bees (*Apis mellifera*) produce it from flower nectar. In the case of Ceiba' honey, the tree plantation of Ceiba pentandra is the best production site. This honey is brownish yellow and slightly thick. Most of the Ceiba' honey production collected by beekeepers is in Ceiba

Affiliation:

¹Faculty of Medicine and Health Sciences, Krida Wacana Christian University (UKRIDA), Jakarta, Indonesia

*Corresponding author:

Kris Herawan Timotius, Faculty of Medicine and Health Sciences, Krida Wacana Christian University (UKRIDA), Jakarta, Indonesia.

Citation: Michelle Angelica Harly, Donna Mesina Rosadini Pasaribu, and Kris Herawan Timotius. Inhibitory Activity of Ceiba' Honey against *Escherichia Coli* ATCC 33218. International Journal of Applied Biology and Pharmaceutical Technology 13 (2022): 014-018.

Received: April 12, 2022

Accepted: June 19, 2022

Published: June 27, 2022

plantation areas of *C. pentandra* in Central Java and East Java [9,10]. *C. pentandra* (local name: kapok or randu tree) grows in Asia countries, such as India, Indonesia, Thailand, and the Philippines. The kapok tree serves as a host for honey bees. This plant is cultivated in the tropics because it requires conditions with high rainfall levels [11]. Ceiba' honey is relatively cheaper than other kinds of honey in Indonesia. It is rich in minerals such as potassium, magnesium, chlorine, sodium, iron, sulfur, and phosphate. It is also rich in thiamin (B1), riboflavin (B2), niacin (B3), pyridoxine (B6), ascorbic acid (C), vitamin K, biotin, pantothenic acid, and folic acid [12,13]. Its antibacterial properties depend on its low pH, high sugar concentration, and the presence of H_2O_2 . With a high sugar concentration, bacteria lose water due to osmotic pressure and dry out, while a low pH inhibits bacterial growth [9,10]. Some studies found that a mixture of H_2O_2 and ascorbic acid produced an antibacterial mechanism that increased lysozyme lysis and bacterial death [9]. Glucose oxidase activity produces H_2O_2 aerobically from glucose. The function of H_2O_2 in honey is to prevent damage from raw Honey [10]. In addition, organic compounds in honey, such as polyphenols and glycosides, have antibacterial activities. They can damage the integrity of the cell wall so that they can kill the bacteria [14]. Flavonoid compounds in the honey can inhibit the nucleic acid synthesis and the cytoplasmic function of the target bacterial membrane [9]. The objectives of this study were to characterize the morphology and the antibiotic sensitivity of *Escherichia coli* ATCC 33218 to determine whether the strain is ESBL strain; to investigate the antibiotic activity of Ceiba' honey against *Escherichia coli* ATCC 33218. We used IZ, MIC, MBC, and time-kill growth tests to evaluate the antibacterial activity of Ceiba' honey against *E.coli*.

Material and Methods

Escherichia Coli

The strain used in this study was *Escherichia coli* ATCC 33218 obtained from the Laboratory of Microbiology of this university. The strain was maintained in nutrient agar (Oxoid CM003) at 37°C and pH 4.5 [1]. The colony and microscopic characteristics of the strain were checked regularly.

Ceiba' Honey

There are several kinds of Ceiba' honey available in the market. We chose Ceiba' honey produced by Perhutani (Perusahaan Hutan Negara Indonesia, Indonesian State Forest Company), Bogor (Figure 1).

Inhibitory Zone Test of Ceiba' Honey against *Escherichia coli*

The bacterial suspension was spread in nutrient agar containing Petri disc. Small wells with 0.5 cm diameter were prepared and filled with 50 μ L of Ceiba' honey. Incubation was at 37°C for 24 hours. The inhibition zones were measured [15].

Method of Minimal Inhibitory Concentration (MIC) and Minimal Bactericidal Concentration (MBC)

Serial concentrations of original Ceiba' honey tested for MIC and MBC were 10, 20, 30, 40, 50, 60, and 80%. The overnight bacterial suspensions (0.5 McFarland) were inoculated into the honey and nutrient broth-containing test tubes. MIC is an antibacterial test solution at a minimal level that can inhibit bacterial growth. Then, the solution specified as MIC and other solutions in the next step will be streaked on McConkey agar media and incubated at 37°C for 24 hours. The no-growth with a minimum concentration of honey is called MBC.

Time-kill Growth

Time-kill growth was carried out using Personal Reactor (RTS-1) BioSan. Bioreactor tubes (falcon tubes) were filled with nutrient broth and different concentrations of honey. The tube was placed into the Bioreactor, then rotated at a speed of 1000 rpm and a wavelength of 850 nm for 24 hours. The culture's optical density was automatically measured by the sensor and recorded by the computer system of the Biosan. From the computer system, we could obtain the growth curve. Calculating the lag phase, growth rate, and biomass yield followed the information obtained from the computer system of Biosan.

Results

Is *Escherichia coli* ATCC 33218 belong to Extended-Spectrum Beta-Lactamase?

Morphological and microscopic testing of *Escherichia coli* ATCC 33218 revealed that the strain is true *Escherichia coli*. Gram staining proved the purity of the strain. It had



Figure 1: Perhutani Ceiba' Honey.

a large colony shape, round, thick, grayish white, moist, smooth, and opaque (Figure 2) [16]. Based on antibiotic sensitivity tests of *Escherichia coli* ATCC 33218 as listed in Table 1, the strain is not an ESBL strain, even though it is a multi-antibiotic resistance strain. Among five beta-lactam antibiotics (Table 1), the strain is sensitive against Cefotaxime. Nevertheless, it is resistant to Ampicillin, Amoxycillin, Penicillin, and Oxacillin. This strain is resistant to macrolide, Streptomycin, and Chloramphenicol. Based on the antibiotic sensitivity tests, this *Escherichia coli* ATCC 33218 is Multidrug Resistance (MDR).

Inhibitory Zone of Ceiba' Honey against *Escherichia Coli*

Ceiba's honey inhibition zone showed a strong inhibitory effect on *Escherichia coli* (Figure 2). This test revealed the antibacterial inhibition of Ceiba' honey in vitro. The inhibition zone diameter range was 11-20 mm, which denotes "strong or very strong" inhibition [17].

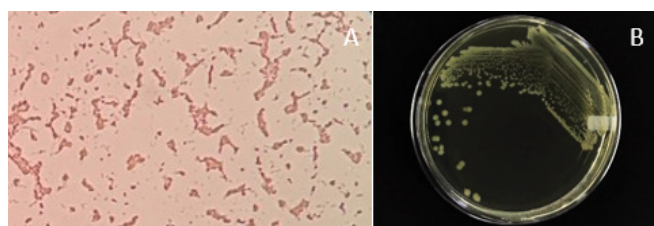


Figure 2: Microscopic image (400x) (A) and colony morphology of *Escherichia coli* ATCC 33218 (B).

The test results (Figure 3) showed that the 50μL volume had an inhibition zone of 44.10 mm. Therefore, Ceiba' honey has a powerful inhibition capacity.

Test of Minimal Inhibitory Concentration (MIC) and minimal bactericidal concentration (MBC) of Ceiba' Honey against *Escherichia coli* ATCC 33218

The results (Figure 4) obtained from this activity test were optical density in the tubes. The results showed that the tube with 30% (v/v) honey was the minimum inhibitory concentration (MIC). Higher than 30%, there is no more visible density or growth of *Escherichia coli*. After getting results from MIC, the minimum bactericidal concentration (MBC) tests were carried out (Figure 5). The minimal bactericidal concentration (MBC) of Ceiba' honey was 40% (v/v). Above 40%, *Escherichia coli* did not grow.

Time-kill Growth of *Escherichia coli*

Ceiba' honey can inhibit the growth of *E. coli*. Added Ceiba honey to the growing culture can prolong the lag phase, slow the growth rate, and decrease the biomass yield (Figure 6, Table 2). Up to 40% Ceiba' honey concentrations, the bacteria could no longer grow. The bacteria can still grow a little at a honey concentration of 30% (v/v).

Discussion

The strain we investigated in this study is not ESBL strain. Previously, we hoped that this strain belonged to ESBL strain. Nevertheless, the strain ATCC 33218 is a multi-drug

Table 1: Sensitivity of *Escherichia coli* ATCC 33218 against antibiotics.

Abbreviation	Antibiotic	Sensitivity	Abbreviation	Antibiotic	Sensitivity
B-lactam antibiotic			Aminoglycoside		
AMP	Ampicillin	R	CN	Gentamycin	S
AML	Amoxycillin	R	K	Kanamycin	S
CTX	Cefotaxime	S	S	Streptomycin	R
P	Penicillin	R	N	Neomycin	S
OX	Oxacillin	R			
Quilonone			Others		
CIP	Ciprofloxacin	S	PB	Polymyxin B	S
NA	Nalidixic acid	S	C	Chloramphenicol	R
OFX	Ofloxacin	S	TE	Tetracycline	S
Fluoroquilonone			W	Trimethoprim	S
NOR	Norfloxacin	S	IPM	Imipenem	S
Macrolide			NV	Novobiocin	S
DA	Clindamycin	R	CRO	Ceftriaxone	S
E	Erythromycin	R	FOX	Cefoxitin	S

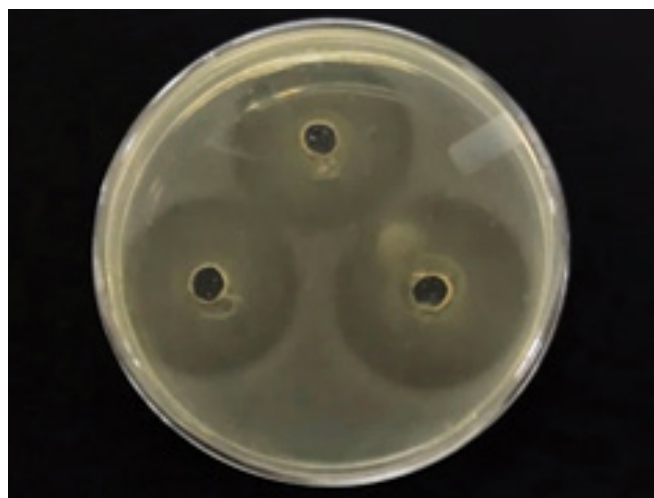


Figure 3: Zone inhibition of Ceiba honey.

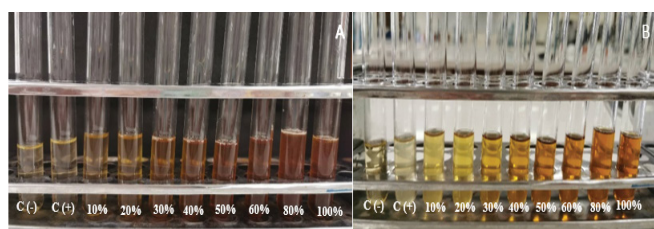


Figure 4: Before (A) and after (B) incubation results.

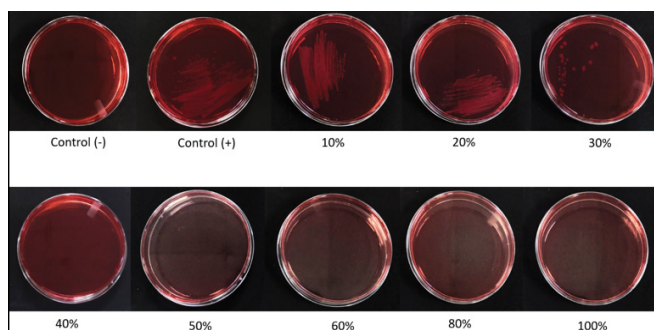


Figure 5: MBC result.

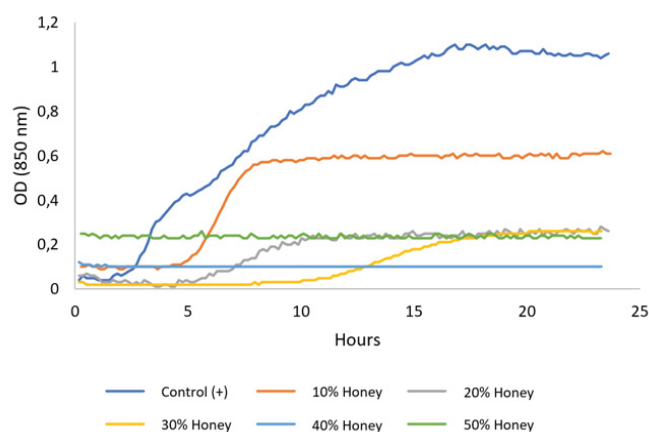


Figure 6: Growth curve of *Escherichia coli* under different treatments.

Table 2: Influence of Ceiba honey on the growth rate, max OD₈₅₀, and biomass yield.

Honey (%)	Growth rate (μ) (h ⁻¹)	Max OD ₈₅₀	Biomass (mg/ml)
0 (control)	0,19	1	3.3
10	0,18	0.6	2.4
20	0,07	0.25	1
30	0,04	0.25	0.8
40	0,00	0.1	0
50	0,00	0.25	0

resistance (MDR). ESBL-producing *Escherichia coli* should be resistant to cefotaxime [18]. This study proved that Ceiba' honey has potent inhibitory activity against *Escherichia coli* ATCC 33218. This capacity depends on its bioactive compounds that have antibacterial activity. Several bioactive compounds contribute to the antimicrobial activity of honey. These substances are associated with antioxidants and protein compounds, such as polyphenols, lysozyme, flavonoids, and other phenolic compounds, methylglyoxal, inhibin, glycosides, and peptides bee. They generally have antibacterial properties by damaging the integrity of the cell wall so that they can inhibit or kill. Flavonoid compounds act by inhibiting the nucleic acid synthesis and the cytoplasmic function of the target bacterial membrane [9]. In addition, other factors such as low pH, high sugar concentration (osmotic nature), and the presence of H₂O₂ are also essential [9,10]. These factors depend on several aspects, such as honey harvesting time, moisture content, color, taste, and aroma of honey [13]. With the rise in the prevalence of antibiotic-resistant bacteria, honey is increasingly valued for its antibacterial activity, not only against *E. coli* but also too many other bacteria, *Bacillus subtilis*, methicillin-resistant *Staphylococcus aureus*, extended-spectrum beta-lactamase-producing *Escherichia coli*, ciprofloxacin-resistant *Pseudomonas aeruginosa*, and vancomycin-resistant *Enterococcus faecium*. [19].

Conclusion

This experiment showed that the ATCC 33218 is not ESBL strain. Ceiba' honey has powerful inhibitory activity against *Escherichia coli*. MIC, MBC, and time-kill growth data confirmed this inhibitory activity. Further research can be carried out using other bacterial species, other types of honey originating, and the preparative extraction process.

References

- Rahayu PW, Komalasari E. *Escherichia coli*: Pathogenicity, Analysis and Risk study (Escherichia coli: Patogenitas, Analisis, dan Kajian Resiko.). IPB Press Bogor (2018).

2. Mahmud ZH, Kabir MH, Ali S, et al. Extended-Spectrum Beta-Lactamase-Producing *Escherichia coli* in Drinking Water Samples From a Forcibly Displaced, Densely Populated Community Setting in Bangladesh 8 (2020).
3. Centers for Disease Control and Prevention. ESBL-producing Enterobacterales in Healthcare Settings. Clifton Road Atlanta, GA 30329-4027 USA (2019).
4. Hospital QC. Extended spectrum beta lactamase (ESBL) fact sheet (2016).
5. Suryaputra KF, Dharmawan A. Efektivitas Daya Hambat Disinfektan Klorin terhadap Bakteri *Escherichia Coli* Penghasil Extended Spectrum Beta Lactamase. Jurnal Kedokteran Meditek 27 (2021).
6. Conly JM, Johnston BL. Where are all the new antibiotics? The new antibiotic paradox. Can J Infect Dis Med Microbiol 16 (2005): 159-160.
7. Evahelda Evahelda FP, Santoso B. Sifat Fisik dan Kimia Madu dari Nektar Pohon Karet di Kabupaten Bangka Tengah, Indonesia. AGRITECH 37 (2017): 363-368.
8. Rahmanidar NZE, Harnawati RA. Penerapan Hidup Sehat dengan Mengonsumsi Madu dan Vitamin untuk Meningkatkan Imunitas Petugas Kesehatan serta Mencegah Covid-19 Di RSUD Kardinah Kota Tegal. Jurnal Pengabdian Nusantara (J ABDINUS) 4 (2021): 306-307.
9. Fadhillah RR, Diyantoro, Indriati DW, et al. Antibacterial potency of Indonesian Randu Honey against *Staphylococcus sp.* Journal Malaysian Journal of Medicine and Health Sciences 16 (2020): 67-71.
10. Widiarti A, Kuntadi. Beekeeping of *Apis mellifera* L. Honeybees by Rural People in Pati Regency, Central Java (Budidaya lebah madu *Apis mellifera* L. oleh masyarakat pedesaan kabupaten Pati, Jawa Tengah). Jurnal Penelitian Hutan dan Konservasi Alam 9 (2012): 351-361.
11. Pratiwi H. Potensi Kapuk Randu (*Ceiba Pentandra* Gaertn.) Dalam Penyediaan Obat Herbal. E-Journal WIDYA Kesehatan Dan Lingkungan 1 (2014): 53-54.
12. National-Parks-Board. *Ceiba pentandra*. National Parks Board (2021).
13. Sukmawati SNA, Firdaus F. Quality Analysis Of Honey Mallawa Parameters Based On Physical Chemistry (Analisis Kualitas Madu Mallawa Berdasarkan Parameter Fisika Kimia). Indonesian Journal of Chemical Research 3 (2015): 259-260.
14. Sundari A. Manfaat Madu Randu sebagai Antibakteri Bahan Herbal. University of Airlangga NEWS (UNAIR news)(February) (2021): 1-3.
15. Effendi F, Roswien AP, Stefanie E. antibacterial activity test of Combucha tea against *Escherichia coli* and *Staphylococcus aureus* (Uji Aktivitas Antibakteri Teh Kombucha Probiotik Terhadap Bakteri *Escherichia coli* dan *Staphylococcus aureus*). J Pharm Tech 37 (2014): 34-41.
16. Datta F, Daki A, Benu I, et al. Antibacterial activity of lactic acid bacteria from rumen fluid against *Salmonella enteritidis*, *Bacillus subtilis cereus*, *Escherichia coli* and *Staphylococcus* with well diffusion method (Uji Aktivitas Antimikroba Bakteri Asam Laktat Cairan Rumen Terhadap Pertumbuhan *Salmonella Enteritidis*, *Bacillus cereus*, *Escherichia coli* Dan *Staphylococcus aureus* Menggunakan Metode Difusi Sumur Cair). J Undana 71 (2019).
17. Maier R, Pepper IL, Gerba CP. Environmental microbiology 2nd ed. USA. Academic Press (2011): 38-43.
18. Kurekci C, Aydin M, Yipel M, et al. Characterization of extended spectrum β -lactamase (ESBL)-producing *Escherichia coli* in Asi (Orontes) River in Turkey. J Water Health 15 (2017): 788-798.
19. Kwakman PH, te Velde AA, de Boer L, et al. (2010). How honey kills bacteria. Faseb j 24 (2010): 2576-2582.