

Allergic Bronchopulmonary Aspergillosis: Lessons Learnt from Genetics

Allergic bronchopulmonary aspergillosis (ABPA) is a complex hypersensitivity reaction, most often encountered in patients with bronchial asthma or cystic fibrosis (CF), as a consequence of colonisation of the tracheobronchial tree by *Aspergillus fumigatus*.¹ It complicates the course of 2% to 32% of patients with bronchial asthma and 1% to 15% of patients with CF.^{2,3} This disorder was first described by Hinson in 1952 from the United Kingdom,⁴ whereas the first case was described from India in 1971.⁵ The disease presents with varied clinical and radiographic manifestations ranging from an asymptomatic patient with or without pulmonary infiltrates to severe uncontrolled asthma with or without central bronchiectasis.⁶ Bronchiectasis may be absent in the early stages of the disease (seropositive ABPA).⁷⁻¹⁰ The major reason of interest in this entity stems from the fact that the condition responds remarkably to glucocorticoid therapy, and early diagnosis and treatment can prevent progression to end-stage lung disease.^{11,12}

In ABPA, the immune responses are heavily skewed towards a Th2 CD4+ T-cell response with interleukin-4 (IL-4), IL-5 and IL-13 secretion with little or no IL-2 or interferon-gamma (IFN- γ) secretion.¹³⁻¹⁷ *Aspergillus* hypersensitivity can be considered as the first step in the development of ABPA, and ABPA can be conceptualised as an exaggerated form of *Aspergillus* hypersensitivity. However, only a minority of patients with *Aspergillus* sensitivity go on to develop the complete clinical picture of ABPA.¹⁸ Why does the immune response in ABPA differ from *Aspergillus* sensitive asthma patients? It was initially thought that exposure to large concentrations of *A. fumigatus* cause ABPA as in exposure to garbage dump sites, agricultural conditions, bird droppings, and smoking moldy marijuana.^{4,19-22} While the exposure to the fungi is universal, ABPA is seen in only a minority of individuals demonstrating that specific host susceptibility factors may be important for the development of the disease. It has been hypothesised that ABPA develops in patients with bronchial asthma and CF who are genetically predisposed.²³ There are references to the relationship between genetic risk factors and ABPA in the published literature (Table 1).^{14,15,24-41} The first insight into genetic risk factor for ABPA was made in 1978, when the association between human leukocyte antigen (HLA) alleles and the disorder was studied.²⁴ No consistent association between the HLA alleles and ABPA was noted. Since then, numerous studies have evaluated genetic predisposition in ABPA and

have found association with numerous genetic mutations/polymorphisms. Abnormalities in the CF transmembrane conductance regulator (CFTR) gene, innate immune response and/or the adaptive immune response can predispose to ABPA.

The occurrence of ABPA in CF raises the possibility that mutations in the CFTR gene may be associated with ABPA. A key element in immunopathogenesis of ABPA may be exposure of bronchial lymphoid tissue to high levels of *Aspergillus* (and their allergens), perhaps because of abnormal mucus properties resulting from the CFTR mutations.⁴² In support of this hypothesis, five small studies^{26,27,29,31,41} suggest that subjects with ABPA have a higher carrier rate of CFTR mutations compared to the general population. Genetic polymorphisms in the innate immunity can lead to either persistence of *A. fumigatus* in the airways or modify the subsequent immune responses. The collectins (surfactant protein [SP]-A, SP-D, mannose binding lectin [MBL]), a family of antimicrobial peptides secreted into the airways; and, toll-like receptors (TLRs), a class of proteins that recognise structurally conserved molecules derived from microbes play an important role in innate immunity. Polymorphisms in the genes encoding these proteins (SP-A, MBL, TLR-9) have been shown to be associated with ABPA.^{32,35,36,39,40} The adaptive immune system is composed of highly specialised processes that eliminate or prevent pathogenic challenges with the key player being T-cells. The polymorphic MHC class II molecules on antigen presenting cells play a critical role in restricting antigen specific T-cell activation, which is important in the induction of immune responses to extrinsic allergens. These events determine the ensuing phenotype of the responding T-cells, the nature of antibodies synthesised and the character of the resulting inflammatory response. Several authors have found association between MHC class II polymorphisms and ABPA (Table 1).^{14,27,28} The T-cell receptors are another key component involved in T-cell recognition of an allergen, and T-cell receptor usage might play a significant role in the production of allergen specific antibodies. Chauhan *et al*³⁰ found that V β 13 gene was associated with susceptibility to ABPA whereas the V β 1 gene was associated with resistance. Finally, genetic polymorphisms of the cytokines (or their receptors) involved in adaptive immune response can also predispose to ABPA. Specifically polymorphisms of IL-10, IL-4R α , and transforming growth factor-beta (TGF- β) genes have been associated with ABPA.^{33,37,38}

Table 1. Studies evaluating genetic susceptibility in allergic bronchopulmonary aspergillosis complicating bronchial asthma and cystic fibrosis

Author (year) ^{reference}	Number of Patients with Disease	Control Population	Genetic Risk Evaluated	Results
Flaherty (1978) ²⁴	22 ABPA	69	HLA alleles	No consistent association with HLA
Morris (1980) ²⁵	21 ABPA; 82 asthma	100	HLA alleles	HLA B12 associated with production of IgE antibodies
Chauhan (1996) ¹⁴	3 ABPA	—	HLA alleles	HLA DR2 and DR5 restriction noted in ABPA. Specific HLA DR2 (DRB1*1501, DRB1*1503 and DRB1*1601 and DR5 alleles (DRB1*1101, DRB1*1104 and DRB1*1202) were prevalent in ABPA vs controls
Miller (1996) ²⁶	11 ABPA	53	6 CFTR mutations	1 patient carried 2 CF (ΔF508; R347H) and 5 carried 1 CF (4 ΔF508; 1 R117H). Mutations seen in 6/11 ABPA vs 1/53 controls
Chauhan (1997) ¹⁵	18 ABPA	Historical	HLA alleles	HLA DR2/DR5 restriction: 88.8% ABPA vs 42.1% controls. Frequency of HLA DR2 (44.4 vs. 19.9%) and DR5 (38.8 vs. 19%) significantly increased in ABPA. Same allele subtypes as described previously
Aron (1999) ²⁷	16 ABPA, 56 allergy, 98 CF	39	HLA alleles, 31 CFTR mutations	HLA DR4/DR7 increased in ABPA/allergy/CF vs controls. DR7 association highest in ABPA, DR5 non-significantly increased in ABPA. CFTR mutation (1 R1162X; 1 N1303K, 2 ΔF508) in 4/14 (28%) vs 4% general population
Chauhan (2000) ²⁸	35 asthma/CF associated ABPA, 50 Af asthma	98	HLA alleles	HLA DR2/DR5: 74.3% ABPA vs 36% Af asthma vs 34.7% controls. Specific HLA DR2 (DRB1*1503) allele almost exclusively seen in ABPA (20%)
Marchand (2001) ²⁹	21 ABPA, 43 Af negative asthma	142	13 CFTR mutations	CFTR mutations encountered in 6/21 (2 ΔF508; 1 C542X; 1 R1162X; 1 R117H; 1 717-1 G >A) ABPA vs 2/43 Af negative asthma vs 6/142 controls
Chauhan (2002) ³⁰	14 ABPA (12 asthma/2 CF), 12 Af asthma	—	T-cell receptors	86% of ABPA expressed Vβ13 gene indicating its role in susceptibility; Vβ1 seen in non-ABPA indicating its role in resistance
Eaton (2002) ³¹	31 ABPA, 23 Af asthma, 21 Af-asthma	34	16 CFTR mutations	4/31 patients with ABPA showed CFTR mutations (3 ΔF508; 1 R117H) vs. 1 of 23, 21 and 34 in Af-asthma, Af-asthma and controls, respectively
Saxena (2003) ³²	22 ABPA	23	SP A polymorphisms	2 intronic polymorphism SPA-1 (C1416T, T1492C) and 2 exonic polymorphism SPA-2 (G1649C, A1660G) increased in ABPA vs controls. SPA-2 A1660G and G1649C showed stronger association with ABPA and were associated with clinical markers of severity
Brouard (2005) ³³	27 ABPA, 119 Af colonisation	—	IL-10 polymorphisms	IL-10 -1082CG genotype non-significantly high in ABPA whereas the same genotype significantly high in those with Af colonisation
Kurup (2005) ³⁴	Murine ABPA model	—	Numerous gene expression profile	Of the 12000 genes studied, 1300 genes showed enhanced expression and represent chemokine, cytokine, growth factor, signal transduction and transmembrane receptor genes as well as genes related to arginine metabolism
Madan (2005) ³⁵	11 ABPA	20	SP A and MBL polymorphisms	Frequency of the 'A' allele of the intronic SNP G1011A of MBL significantly higher in ABPA than controls. ABPA patients with G1649C. A1660G alleles of SP-A2 and G1011A of MBL showed significantly high IgE levels and eosinophilia
Kaur (2006) ³⁶	11 ABPA, 49 asthma with allergic rhinitis	84	MBL polymorphisms	G1011A intronic SNP of MBL significantly increased in asthma and ABPA compared to controls but not in ABPA vs asthma
Knutson (2006) ³⁷	14 CF and 26 asthmatic ABPA, 56 non-ABPA CF (33) and asthmatic (23) controls	—	IL-4Rα polymorphisms	Any IL-4Rα polymorphisms seen in 38/40 (95%) ABPA vs 34/56 (61%) non-ABPA patients. The ile75val IL-4Rα SNP seen in 80% ABPA vs 54% non-ABPA. The ile75val IL-4Rα homozygous SNP seen in 43% ABPA vs 11% non-ABPA
Sambatakou (2006) ³⁸	9 ABPA, 2 SAFS, 1 AFS,	65-330	IL-10, IL-15, IFN-γ, TNF-α and TGF-β polymorphisms	ABPA associated with IL-10-1082*G and G/G, TGF-β +869T allele. No association with IL-15, IFN-γ or TNF-α alleles
Vaid (2007) ³⁹	7 ABPA	47	SPA-1, SPA-2 and MBL polymorphisms	Intronic polymorphism at T1492C and codon polymorphism at G1649C of SP-A2 in ABPA. T allele at position 868 of MBL seen with increased frequency in ABPA
Carvalho (2008) ⁴⁰	22 ABPA, 14 SAFS	80	TLR polymorphisms	Susceptibility to ABPA seen with allele Con T-1237 C (TLR9). However, importance not known whether it is due to coexistent asthma or ABPA as all patients also had asthma
Lebecque (2011) ⁴¹	18 ABPA	> 1300 CFTR mutations	> 1300 CFTR mutations	12/18 ABPA patients showed CFTR mutation. No asthma control group

ABPA=Allergic bronchopulmonary aspergillosis; CF=Cystic fibrosis; Af=Aspergillus fumigatus; SAFS=Severe asthma with fungal sensitisation; AFS=Allergic fungal sinusitis; HLA=Human leukocyte antigen; CFTR=CF transmembrane conductance regulator; SP=Surfactant protein; IL=Interleukin; MBL=Mannose binding lectin; IFN=Interferon; TNF=Tumour necrosis factor; TGF=Transforming growth factor; TLR=Toll-like receptor; vs=Versus; IgE=Immunoglobulin E; SNP=Single nucleotide polymorphism

The caveat associated with the above studies is not only that they have studied different aspects of pathogenetic susceptibility factors in ABPA but also the numbers of patients are quite small. However, one thing which is clear is that ABPA represents the classic example of genetic heterogeneity, wherein mutations in different genes can result in the same phenotype. Thus, it can be hypothesised that on a background of genetic susceptibility^{14,23,26-29,31-33,37-40} (Figure), inhaled conidia of *A. fumigatus* (and occasionally other *Aspergillus* species) are able to persist and germinate, leading to the growth of hyphae in mucus plugs. This leads to the release of *A. fumigatus* antigens and exoproteases that can compromise mucociliary clearance, stimulate and breach the airway epithelial barrier. This causes activation of the innate and adaptive immune system responses of the lung, including the epithelial and the alveolar production of several Th2 cytokines leading to total and *A. fumigatus* specific immunoglobulin E (IgE) synthesis, mast cell degranulation and promotion of a strong eosinophilic response.⁴³⁻⁴⁶

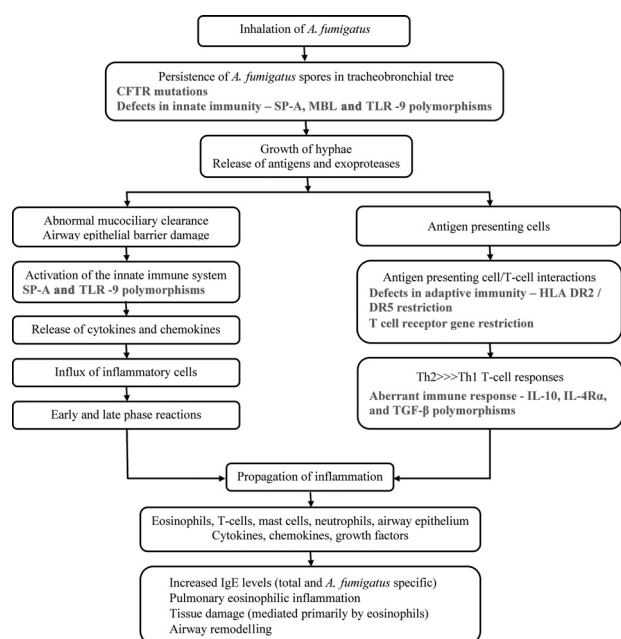


Figure. A hypothesised model of immunopathogenesis of ABPA. The role of specific genetic polymorphisms at various steps of pathogenesis have been highlighted.

CFTR=Cystic fibrosis transmembrane conductance regulator; MBL=Mannose binding lectin; SP=Surfactant protein; TLR=Toll-like receptor; HLA=Human leucocyte antigen; IL=Interleukin; TGF- β =Transforming growth factor-beta; IgE=Immunoglobulin E

In conclusion, the ubiquitous presence of *A. fumigatus*, and its ability to infect the lung makes it an important fungal pathogen, which requires better mechanisms of diagnosis and effective treatment strategies. Recent advances in the understanding of

the immune responses and developments in molecular biology have led to considerable insight in understanding of this entity. Further studies should characterise how genetic defects in CFTR, innate and adaptive immunity interact to predispose to ABPA. This understanding will enable the researchers/clinicians to develop agents that can modulate the immune response for the benefit of the patient.

Ritesh Agarwal

Member, Editorial Board
and

Assistant Professor

Department of Pulmonary Medicine

Postgraduate Institute of Medical Education and Research

Sector-12, Chandigarh-160 012, India

REFERENCES

- Agarwal R. Allergic bronchopulmonary aspergillosis. In: Jindal SK, Shankar PS, Raoof S, et al, editors *Textbook of Pulmonary and Critical Care Medicine*. New Delhi: Jaypee Brothers Medical Publishers (P) Ltd;2010;pp947-970.
- Agarwal R. Allergic bronchopulmonary aspergillosis. *Chest* 2009;135:805-26.
- Agarwal R, Aggarwal AN, Gupta D, Jindal SK. *Aspergillus* hypersensitivity and allergic bronchopulmonary aspergillosis in patients with bronchial asthma: systematic review and meta-analysis. *Int J Tuberc Lung Dis* 2009;13: 936-44.
- Hinson KFW, Moon AJ, Plummer NS. Bronchopulmonary aspergillosis: a review and a report of eight new cases. *Thorax* 1952;7:317-33.
- Shah JR. Allergic bronchopulmonary aspergillosis. *J Assoc Physicians India* 1971;19:835-41.
- Agarwal R, Chakrabarti A. Clinical manifestations and natural history of allergic bronchopulmonary aspergillosis. In: Pasqualotto AC, editor. *Aspergillosis: From Diagnosis to Prevention*. New York: Springer;2009;pp707-24.
- Agarwal R, Gupta D, Aggarwal AN, Behera D, Jindal SK. Allergic bronchopulmonary aspergillosis: lessons from 126 patients attending a chest clinic in north India. *Chest* 2006; 130:442-8.
- Agarwal R, Gupta D, Aggarwal AN, Saxena AK, Chakrabarti A, Jindal SK. Clinical significance of hyperattenuating mucoid impaction in allergic bronchopulmonary aspergillosis: an analysis of 155 patients. *Chest* 2007;132:1183-90.
- Agarwal R, Gupta D, Aggarwal AN, Saxena AK, Saikia B, Chakrabarti A, et al. Clinical significance of decline in serum IgE levels in allergic bronchopulmonary aspergillosis. *Respir Med* 2010;104:204-10.
- Agarwal R, Khan A, Gupta D, Aggarwal AN, Saxena AK, Chakrabarti A. An alternate method of classifying allergic bronchopulmonary aspergillosis based on high-attenuation mucus. *PLoS One* 2010;5:e15346.
- Patterson R, Greenberger PA, Halwig JM, Liotta JL, Roberts M. Allergic bronchopulmonary aspergillosis: natural history and classification of early disease by serologic and roentgenographic studies. *Arch Intern Med* 1986;146:916-8.
- Agarwal R. Controversies in allergic bronchopulmonary aspergillosis. *Int J Respir Care* 2010;6:53-54, 56-63.

- 13 Knutsen AP, Mueller KR, Levine AD, Chouhan B, Hutcheson PS, Slavin RG. Asp f I CD4+ TH2-like T-cell lines in allergic bronchopulmonary aspergillosis. *J Allergy Clin Immunol* 1994;94:215-21.
- 14 Chauhan B, Knutsen A, Hutcheson PS, Slavin RG, Bellone CJ. T cell subsets, epitope mapping, and HLA-restriction in patients with allergic bronchopulmonary aspergillosis. *J Clin Invest* 1996;97:2324-31.
- 15 Chauhan B, Santiago L, Kirschmann DA, Hauptfeld V, Knutsen AP, Hutcheson PS, et al. The association of HLA-DR alleles and T cell activation with allergic bronchopulmonary aspergillosis. *J Immunol* 1997;159:4072-6.
- 16 Schuyler M. The Th1/Th2 paradigm in allergic bronchopulmonary aspergillosis. *J Lab Clin Med* 1998;131:194-6.
- 17 Knutsen AP, Bellone C, Kauffman H. Immunopathogenesis of allergic bronchopulmonary aspergillosis in cystic fibrosis. *J Cyst Fibros* 2002;1:76-89.
- 18 Bateman ED. A new look at the natural history of *Aspergillus* hypersensitivity in asthmatics. *Respir Med* 1994;88:325-7.
- 19 Henderson AH. Allergic aspergillosis: review of 32 cases. *Thorax* 1968;23:513-23.
- 20 Kramer MN, Kurup VP, Fink JN. Allergic bronchopulmonary aspergillosis from a contaminated dump site. *Am Rev Respir Dis* 1989;140:1086-8.
- 21 Kagen SL, Kurup VP, Sohnle PG, Fink JN. Marijuana smoking and fungal sensitization. *J Allergy Clin Immunol* 1983;71:389-93.
- 22 Allmers H, Huber H, Baur X. Two-year follow-up of a garbage collector with allergic bronchopulmonary aspergillosis (ABPA). *Am J Ind Med* 2000;37:438-42.
- 23 Knutsen AP. Genetic and respiratory tract risk factors for aspergillosis: ABPA and asthma with fungal sensitization. *Med Mycol* 2006;44 (Suppl. 1):61-70.
- 24 Flaherty DK, Surfus JE, Geller M, Rosenberg M, Patterson R, Reed CE. HLA antigen frequencies in allergic bronchopulmonary aspergillosis. *Clin Allergy* 1978;8:73-6.
- 25 Morris MJ, Faux JA, Ting A, Morris PJ, Lane DJ. HLA-A, B and C and HLA-DR antigens in intrinsic and allergic asthma. *Clin Allergy* 1980;10:173-9.
- 26 Miller PW, Hamosh A, Macek M, Jr, Greenberger PA, MacLean J, Walden SM, et al. Cystic fibrosis transmembrane conductance regulator (CFTR) gene mutations in allergic bronchopulmonary aspergillosis. *Am J Hum Genet* 1996;59:45-51.
- 27 Aron Y, Bienvenu T, Hubert D, Dusser D, Dall'Ava J, Polla BS. HLA-DR polymorphism in allergic broncho-pulmonary aspergillosis. *J Allergy Clin Immunol* 1999;104:891-2.
- 28 Chauhan B, Santiago L, Hutcheson PS, Schwartz HJ, Spitznagel E, Castro M, et al. Evidence for the involvement of two different MHC class II regions in susceptibility or protection in allergic bronchopulmonary aspergillosis. *J Allergy Clin Immunol* 2000;106:723-9.
- 29 Marchand E, Verellen-Dumoulin C, Mairesse M, Delaunois L, Brancalone P, Rahier JF, et al. Frequency of cystic fibrosis transmembrane conductance regulator gene mutations and 5T allele in patients with allergic bronchopulmonary aspergillosis. *Chest* 2001;119:762-7.
- 30 Chauhan B, Hutcheson PS, Slavin RG, Bellone CJ. T-cell receptor bias in patients with allergic bronchopulmonary aspergillosis. *Hum Immunol* 2002;63:286-94.
- 31 Eaton TE, Weiner Miller P, Garrett JE, Cutting GR. Cystic fibrosis transmembrane conductance regulator gene mutations: do they play a role in the aetiology of allergic bronchopulmonary aspergillosis? *Clin Exp Allergy* 2002;32:756-61.
- 32 Saxena S, Madan T, Shah A, Muralidhar K, Sarma PU. Association of polymorphisms in the collagen region of SP-A2 with increased levels of total IgE antibodies and eosinophilia in patients with allergic bronchopulmonary aspergillosis. *J Allergy Clin Immunol* 2003;111:1001-7.
- 33 Brouard J, Knauer N, Boelle PY, Corvol H, Henrion-Caude A, Flamant C, et al. Influence of interleukin-10 on *Aspergillus fumigatus* infection in patients with cystic fibrosis. *J Infect Dis* 2005;191:1988-91.
- 34 Kurup VP, Raju R, Manickam P. Profile of gene expression in a murine model of allergic bronchopulmonary aspergillosis. *Infect Immun* 2005;73:4381-4.
- 35 Madan T, Kaur S, Saxena S, Singh M, Kishore U, Thiel S, et al. Role of collectins in innate immunity against aspergillosis. *Med Mycol* 2005;43 (Suppl. 1):S155-S163.
- 36 Kaur S, Gupta VK, Shah A, Thiel S, Sarma PU, Madan T. Elevated levels of mannan-binding lectin [corrected] (MBL) and eosinophilia in patients of bronchial asthma with allergic rhinitis and allergic bronchopulmonary aspergillosis associate with a novel intronic polymorphism in MBL. *Clin Exp Immunol* 2006;143:414-9.
- 37 Knutsen AP, Kariuki B, Consolino JD, Warrier MR. IL-4 alpha chain receptor (IL-4Ralpha) polymorphisms in allergic bronchopulmonary aspergillosis. *Clin Mol Allergy* 2006;4:3.
- 38 Sambatakou H, Pravica V, Hutchinson IV, Denning DW. Cytokine profiling of pulmonary aspergillosis. *Int J Immunogenet* 2006;33:297-302.
- 39 Vaid M, Kaur S, Sambatakou H, Madan T, Denning DW, Sarma PU. Distinct alleles of mannose-binding lectin (MBL) and surfactant proteins A (SP-A) in patients with chronic cavitary pulmonary aspergillosis and allergic bronchopulmonary aspergillosis. *Clin Chem Lab Med* 2007;45:183-6.
- 40 Carvalho A, Pasqualotto AC, Pitzurra L, Romani L, Denning DW, Rodrigues F. Polymorphisms in toll-like receptor genes and susceptibility to pulmonary aspergillosis. *J Infect Dis* 2008;197:618-21.
- 41 Lebecque P, Pepermans X, Marchand E, Leonard A, Leal T. ABPA in adulthood: a CFTR-related disorder. *Thorax* 2011; In Press.
- 42 de Almeida MB, Bussamra MH, Rodrigues JC. Allergic bronchopulmonary aspergillosis in paediatric cystic fibrosis patients. *Paediatr Respir Rev* 2006;7:67-72.
- 43 Tomee JF, Wierenga AT, Hiemstra PS, Kauffman HK. Proteases from *Aspergillus fumigatus* induce release of proinflammatory cytokines and cell detachment in airway epithelial cell lines. *J Infect Dis* 1997;176:300-3.
- 44 Tomee JF, Kauffman HF, Klimp AH, de Monchy JG, Koeter GH, Dubois AE. Immunologic significance of a collagen-derived culture filtrate containing proteolytic activity in *Aspergillus*-related diseases. *J Allergy Clin Immunol* 1994;93:768-78.
- 45 Hogaboam CM, Bleas K, Schuh JM. Cytokines and chemokines in allergic bronchopulmonary aspergillosis (ABPA) and experimental *Aspergillus*-induced allergic airway or asthmatic disease. *Front Biosci* 2003;8:e147-56.
- 46 Kauffman HF. Immunopathogenesis of allergic bronchopulmonary aspergillosis and airway remodeling. *Front Biosci* 2003;8:e190-6.